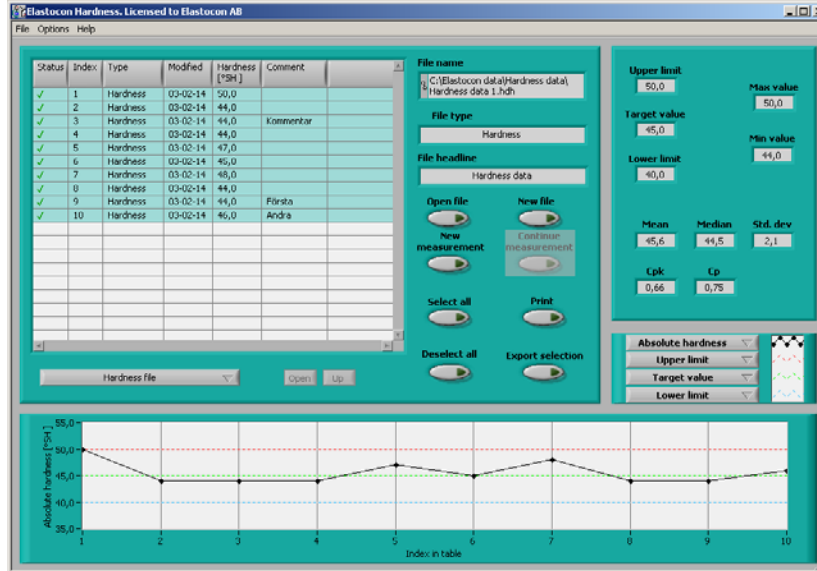


## Hardness Software, EC 01



Presentation Screen

Print out

### Hardness Software EC 01

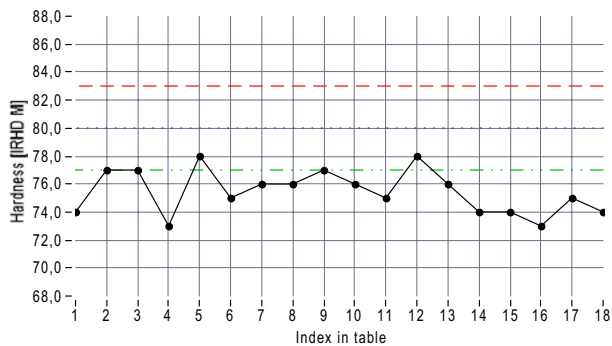
This version of the "Hardness" software can be connected to several hardness testers from Wallace, Bareiss, Zwick and Durotech for all Shore and IRHD scales.

### Measurement of hardness and hardness change.

For hardness change the test end time is calculated from the start date and duration of the test. A reminder note can also be printed.

A material profile is created for each material with limits and target value. The data is stored per material and new measurements are added to existing material profiles. The software collects the values from the connected instrument and plots a trend graph together with statistics. The results can be printed per material.

File name: TA-profil\_Data.hdh No. of series in file: 18  
 Material Profile: TA-profil.hdp Profile comments:  
 Hardware: Bareiss  
 Standard: IRHD M



TA-profil\_Data.hdh  
 Upper limit  
 Target value  
 Lower limit

**Mean:** 75,4    **Upper limit:** 83  
**Median:** 75,5    **Target value:** 80  
**Std. dev.:** 1,5    **Lower limit:** 77  
**Max:** 78    **Cpk:** 0,96  
**Min:** 73    **Cp:** 0,32

Status	Index	Date	Time	Median	Unit	Comments
Fail	1	2002-08-07	09:02:34	74	IRHD M	Cebeco 11/7
Pass	2	2002-08-07	09:04:55	77	IRHD M	Cebeco 11/7-2
Pass	3	2002-08-07	09:09:45	77	IRHD M	Cebeco 16/7-1
Fail	4	2002-08-07	09:12:39	73	IRHD M	Cebeco 16/7-2
Pass	5	2002-08-07	09:15:28	78	IRHD M	Cebeco 16/7-3
Fail	6	2002-08-07	09:19:27	75	IRHD M	Cebeco 16/7-2b
Fail	7	2002-08-07	09:26:33	76	IRHD M	Cebeco 18/7-1
Fail	8	2002-08-07	09:33:52	76	IRHD M	Cebeco 18/7-2
Pass	9	2002-08-07	09:39:17	77	IRHD M	Cebeco 18/7-3
Fail	10	2002-08-07	09:42:56	76	IRHD M	Cebeco 29/7-1
Fail	11	2002-08-07	09:45:17	75	IRHD M	Cebeco 29/7-2
Pass	12	2002-08-07	09:47:54	78	IRHD M	Cebeco 29/7-2
Fail	13	2002-08-07	09:51:10	76	IRHD M	Cebeco 29/7-4